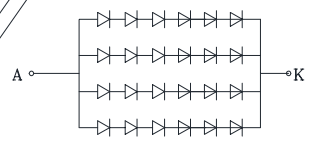


PIN	SYMBOL	PIN	SYMBOL
1	K	24	B1
2	A	25	B2
3	VDD_MTP	26	B3
4	ROM_RLB	27	B4
5	GND	28	B5
6	VDD	29	B6
7	R0	30	B7
8	R1	31	DCLK
9	R2	32	HSYNC
10	R3	33	VSYNC
11	R4	34	DE
12	R5	35	U/D
13	R6	36	L/R
14	R7	37	VDD
15	G0	38	GND
16	G1	39	NC
17	G2	40	NC
18	G3	41	NC
19	G4	42	NC
20	G5	43	NC
21	G6	44	NC
22	G7	45	NC
23	B0		

LED Circuit Diagram



19.1V(TYP)-21V(MAX) @If= 320mA

1	Operating Voltage:	VDD=3.3V typ.
2	Resolution:	800RGB*480
3	Color:	16M
4	Interface:	24-Bits RGB
5	Display type:	Transmissive, IPS Normally Black
6	Viewing Direction:	FREE
7	Operating Temp:	-30°C~85°C
8	Storage Temp:	-30°C~85°C
9	Driver IC:	SC5005-G5*1; SC5004-G5-C05*2
10	LCM Luminance(cd/m2):	700cd/m2(Min.); 1000cd/m2(Typ.)
11	Unspecified tolerance:	±0.3
		Dimensions with mark "*" are important

